

# TAPE MK2



---

Welcome to **HoRNet Tape MK2**, a software simulation of the vintage tape saturation effect that defined music from the 1960s to the 1990s

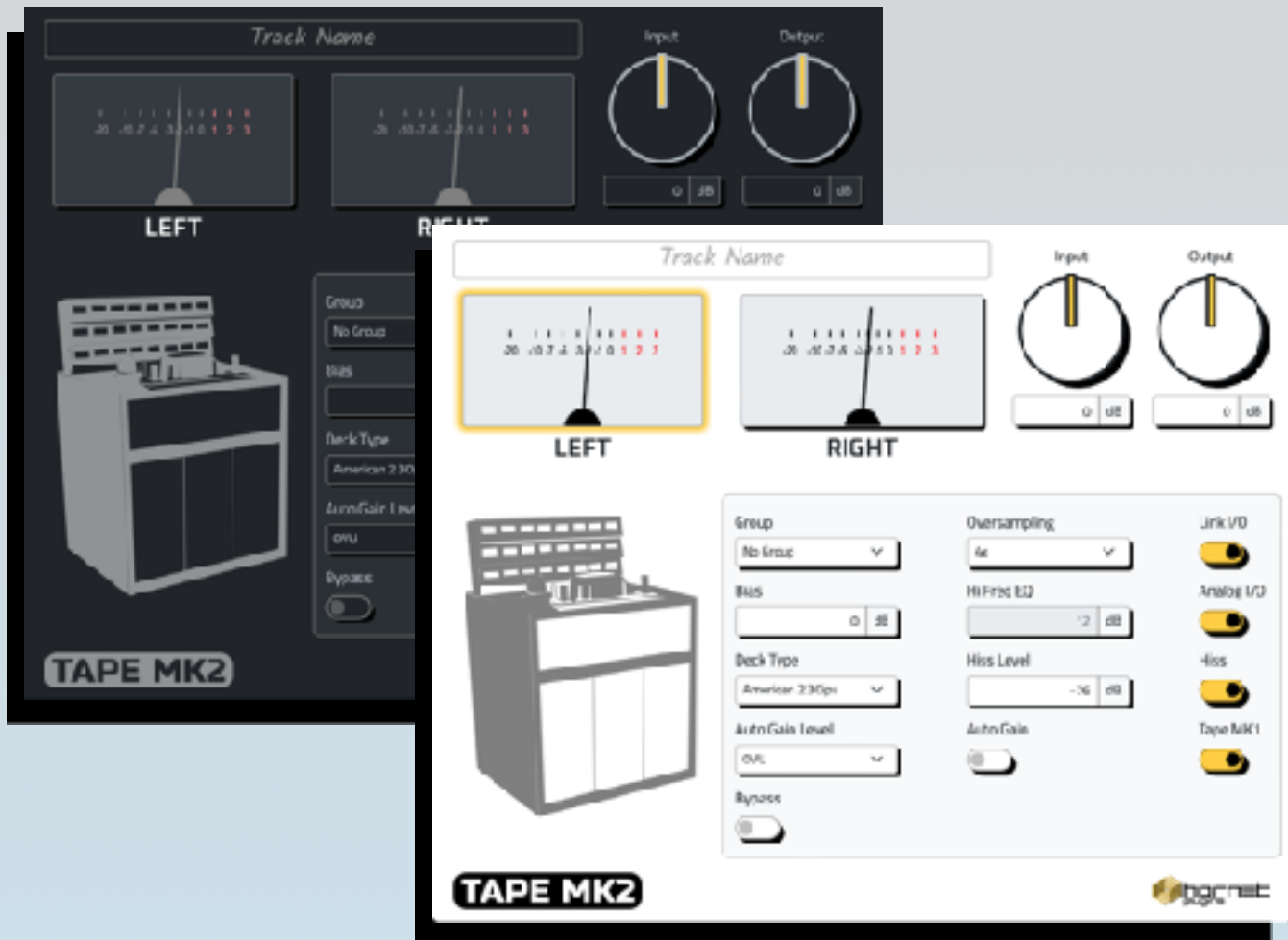
The new **HoRNet Tape MK2** delivers an improved emulation of the physical behavior of real magnetic tape and provides an even more authentic and versatile **tape saturation** experience. The iconic tape decks emulated in **Tape MK2** now feature an improved **mathematical models**, capable of capturing every nuance, including the quirks that made each deck so uniquely distinctive. Additionally, we've introduced a **new deck** in TapeMK2: the "**Swiss 2 Deck**," enriching your palette of tape emulation options.

HoRNet Tape MK2 now includes **oversampling**, which reduces aliasing artifacts, ensuring a smoother and more precise tape saturation effect.

The new **bias control** in HoRNet **Tape MK2** is continuous, allowing for precise calibration and fine-tuning of the saturation characteristics, giving you more control over the sound.

We've added a **pre-emphasis filter**, which is an hi-shelf filter designed to compensate for the natural loss of the hi-frequencies that happens in the tape. This filter replicates the behavior of the so called "recording eq" found in professional tape recorders.

HoRNet Tape MK2 features a new and **sleek graphical interface** that enhances your workflow and provides a visually appealing experience while working with the plugin .



**TapeMK2**, featuring an ultra precise **VU meter**, delivers accurate signal level feedback, allowing for precise adjustments using the **input** and **output** levels.

Right above the VU meters you can see the "**track name**" area where the name of the current track is shown.

You can effortlessly "**group**" any **TapeMK2** instance for quicker and more convenient parameter control on tracks with similar audio content.

The "**Oversampling**" dropdown lets you choose the level of internal oversampling employed by the plugin. You can also opt for the "AUTO oversampling" function, which automatically selects the optimal bandwidth based on the DAW sample rate.

The "**Link I/O**" function ties together the input and output controls, enabling you to amplify the internal audio signal while maintaining consistent loudness.

The "**Analog I/O**" feature introduces extra saturation circuitry both preceding and following the tape section of the plugin that emulates the analog amplifiers of the recorder. You have the option to disable the Analog I/O function, retaining only the tape saturation effect.

The "**bias**" control now enables continuous adjustment of bias levels, allowing you to transition from subtle to extreme saturation settings seamlessly.

The "**High Freq EQ**" is a high shelf EQ that governs the pre-emphasis signal entering the TapeMK2.

The “**Deck Type**” lies at the core of the plugin, offering you the choice of your favorite recording desk from a list of iconic options that have left an indelible mark on the history of music and recording technology. The **tape deck emulation** encompasses the frequency response provided by the magnetic tape and playback head. This alteration in frequency response primarily impacts the lower part of the spectrum and shifts it upward when transitioning from a tape speed of **15 IPS** to **30 IPS**.

The “**bypass**” switches off the processing of the plugin.

The tape **hiss switch** enables or disables the characteristic background noise commonly heard in many analog magnetic tape recordings. Despite being considered a form of noise, tape hiss can contribute to the warm and nostalgic character of analog recordings, adding a unique texture to the audio.

The “**Auto Gain**” technology, integrated into TapeMK2 (as well as our other plugins), takes care of automatically adjusting the input level. It assists in achieving the ideal recording level for your specific sound.

Switching on the “**Tape MK1 switch**” bring back the old DSP from the original HoRNet Tape but adding continuous bias setting and oversample.

HoRNet **Tape MK2** supports automatic interface color switching between light and dark modes, adapting to your operating system settings, but thanks to a preference pane that you can reach clicking on the **TAPE MK2 logo** in the bottom left part of the UI you can chose the theme you prefer.

**HoRNet Tape MK2** is your gateway to the sonic magic of vintage tape machines, with added precision, versatility, and a modern touch. Elevate your music productions with the rich, analog warmth and character that defined an era, now at your fingertips.